



Clinichem-200

Chemistry Analyzer

INNOVATION DESIGN
SMART COMBINATION

200 tests per hour-Time Efficiency

Automated testing & Low Maintenance-Operation Efficiency

150ul reagent consumption-Cost Efficiency

Clinichem-200

Chemistry Analyzer



Sampling probe

- External & internal mirror polish, external & internal probe washing(reducing carry-over)
- Dedicated sampling probe equipped with sensitive liquid sensor, timely feedback of reagent & sample residuals
- Collision protection
- Automatic probe depth adjusting



Multi-functional sample & reagent tray

- 80 reagent positions (40 for R1, 40 for R2)
- 40 sample positions, micro cup & test tube can be used
- Non-stop cooling system with peltier pad inside, 24 hours 2°C -14°C
- Bar code reader(optional)



Reaction tray

- 44 reaction cuvettes
- Reaction volume as low as 150ul
- Stable & accurate temperature (37±0.1 °C) for reaction



Excellent mixer design

- Teflon coating mixer. No water dropping (reducing carry-over)
- Excellent mixing effect with standard mixing procedure



High precision ceramic syringe

- Sample dispensing by frequency converting design
- Permanent ceramic piston
- Accurate dispensing as low as 0.1ul



Washing station

- 4 needles wash-station
- Triple washing
- Effective washing to ensure accurate result and valid diagnostics

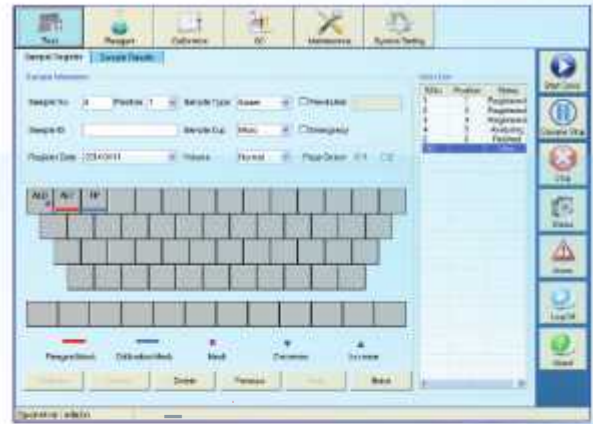


Clinichem-200

Chemistry Analyzer

Powerful Software

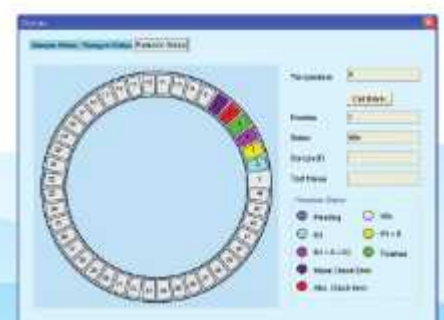
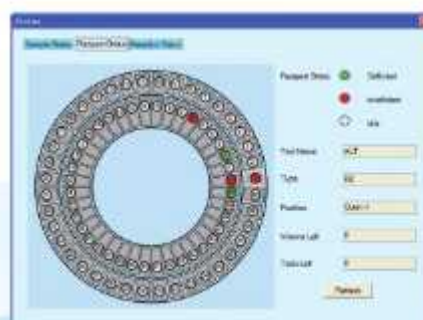
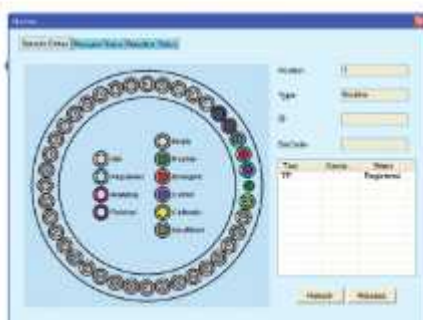
- User friendly software interface simple, easy-to-operation
- Sample automatic dilution(decrease, increase, normal)
- Masking tests when reagent or standard is exhausted



- Calibrator auto-dilution
- Linear & nonlinear calibration
- Multi-points calibration up to 8 points
- Quality control apply to Westgard, L-T plot, Cumulative



- Real-time display of running status
- Real-time display of status of reagent tray, sample tray and reaction tray
- Real-time updating of reagent residuals
- Real-time marking of defective cuvette
- Reaction result automatic checking and warning
- Calibration result automatic checking and warning
- Alarm log: Automatic alarm and record in alarm list with explanations during running process



Clinichem-200

Chemistry Analyzer

Technical specifications

General information

Machine type:	Random access, open reagent & locked reagent (optional)
Test speed:	Constant 200 tests/hour (mono reagent or double reagent)
Test principle:	Colorimetric method, turbidimetry
Test method:	1 point end, 2 point end, Fixed-Time, Kinetics
Calibration type:	Linear & nonlinear

Sample & Reagent unit

Sample tray:	40 sample positions
Sample cup type:	Micro cup & test tube
Reagent tray:	80 reagent positions(40 for R1 & 40 for R2)
Sample volume:	2-30ul, step by 0.1ul
Reagent volume:	20-300ul, step by 1ul
Sample & Reagent bar code reader(optional)	

Reaction unit

Reaction tray:	44 high quality plastic cuvettes
Reaction volume:	150ul-350ul
Reaction time:	15 minutes
Temperature:	Peltier pad incubation system, reaction temperature (37°C±0.1 °C)
Cuvette washing:	3*4 steps automatic washing

Mixing system

Teflon coating mixer


Optical system

Light source:	Halogen lamp
Wavelength:	340nm; 405nm; 450nm;505nm; 546nm; 578nm; 630nm; 700nm (4 more options)
Absorbance range:	0-4.0 Abs
Resolution:	0.0001 Abs

Operation system requirements

Operation system:	Windows XP, Windows 7, Windows8
Interface:	USB

Working conditions

Power supply:	AC 110/220V ± 10%,  00VA
Water consumption:	8L/hour(maximum)
Dimension:	650mm*700mm* 1200mm(L*W*H)